



Article No.: A49034
Articlename: AZURA Bio Pilot System

High flow bio purification system for scale-up and process applications

The AZURA Pilot system was designed for scale-up and process applications. All system modules can be freely exchanged and further ones can be added optionally, to find the best configuration for each purification task. The system proposal consists of two biocompatible buffer pumps to perform gradient between two buffers. Monitor your gradient over the whole run using the conductivity monitor. Inject your sample via the integrated injection valve. The wavelength to detect your sample is freely selectable. The fraction collector collects your purified fractions reliably. The system is controlled via user friendly FPLC software PurityChrom. This software offers a high flexibility in method development and provides you with complete control over your run.

[Help](#)

[Schedule your free consultation now](#)



AZURA Bio Pilot system

[Schedule your free consultation now](#)

TECHNICAL DATA

System specification

Purification	complex, challenging
Application	suitable for all
Gradient	Yes
Flow rate	250 ml/min

[Schedule your free consultation now](#)

SYSTEM COMPONENTS



AZURA P 2.1L

Article No. APE20LC

AZURA® Pump P 2.1L with 250 ml pump head (titanium)

Max. flow rate : **250 ml/min**

Pump head materials : **Titanium**

Gradient : **Isocratic**

Pump features : **Piston seal wash, Leak management, Purge valve (manual), RFID for automatic pump head detection, Active pulsation compensation, Integrated pressure sensor**

Maximum delivery pressure [MPa] : **22.5 MPa**



AZURA Assistant ASM 2.2L

Article No. AY00001

Left module: UV detector UVD 2.1S - EDA03XA Middle module: Valve drive VU 4.1 - EWA04 Right module: Valve drive VU 4.1 - EWA04

Left module : **UV detector UVD 2.1S - EDA03XA**

Middle module : **Valve drive VU 4.1 - EWA04**

Right module : **Valve drive VU 4.1 - EWA04**



Pump head inlet

Article No. A9868

Pump head inlet for AZURA® Pump P 2.1L, Set, 1/2"-20 UNF, PEEK with CTFE (Kel-F) adapter, including tubing 1/4" PTFE

[Schedule your free consultation now](#)

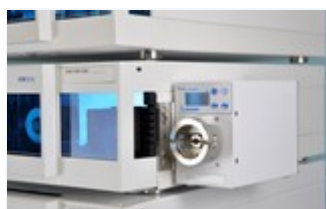


AZURA CM 2.1S with flow cell - up to 100 ml/min

Article No. ADG30GD

AZURA CM 2.1S with flow cell - up to 100 ml/min - conductivity monitor with optional pH measurement

Detector type : **Conductivity monitor**



Mounting bracket for VU 4.1, CM 2.1S and UVD 2.1S

Article No. A9854-3

Mounting bracket AZURA® L for AZURA® Valve Unifier VU 4.1 (both-sided) or AZURA® UVD 2.1S and AZURA® CM 2.1S (left-sided on AZURA® L)



Flow splitter

Article No. A5813

Flow splitter for CM 2.1S when used with flowrates over 100 ml/min



AZURA Eluent tray E 2.1L

Article No. AZC00

AZURA® Eluent tray E 2.1L for AZURA® devices with a capacity of 6 x 1 l bottles or 4 x 2.5 l bottles or 2 x 5 l bottles, (delivery without bottles)

Type : **Eluent tray**

[Schedule your free consultation now](#)



Fraction Collector Foxy R2

Article No. A591021

Fraction collector Foxy® R2 for 1/4" tubing

Max. flow rate : 1000 ml/min

Capillary connection : 1/4"

Brand : **Foxy R2**



Rack for Foxy R1/R2

Article No. A59110

Rack for 36 Falcon 50 ml for Foxy® R1/R2



PurityChrom® Basic

Article No. A2650

Basic License for one system

Software name : **PurityChrom® 5**



Chromatography Workstation: PC plus monitor

Article No. A13120

Desktop PC (SFF) for PurityChrom® and ClarityChrom® with 24" monitor, English edition Windows 10 Prof. 64-bit English, Intel® Core™ i5, 8 GB RAM, 256 GB SSD, two network cards

[Schedule your free consultation now](#)



AZURA FPLC Start-up kit, FEP/PEEK, 1/8"

Article No. A70300

AZURA® FPLC Start-up kit, FEP/PEEK, 1/8" for 100 ml/min - 500 ml/min FPLC systems



Dynamic mixer

Article No. A70581

Dynamic mixing chamber (250 V), titanium, preparative, 1/8", up to 250 bar, 5.9 ml mixing volume

Mixing volume : **5.9 ml**

Pressure rating : **max. 250 bar (25 MPa)**

Recommended flow rate : **< 100 ml/min**



Preparative UV Flow Cell

Article No. A4067

2 mm path length, 1/8", 100 bar, biocompatible, changeable to 0.5/1.25 mm, classical KNAUER flow cell

Flow cell type : **Preparative UV flow cell**

Path length : **0.5 / 1.25 / 2 mm**

Capillary connection : **1/8"**

Max. flow rate : **1000 ml/min**

Flow cell volume : **1.7 / 4.3 / 6.8 µl**

[Schedule your free consultation now](#)



Set of eluent supply bottles

Article No. A70037

Set of eluent supply bottles, 3 x 2.5 L brown glass bottles (borosilicate glass) with special round bottom for minimal eluent remainder, for preparative HPLC/FPLC, includes screw-type cap



250 ml Bottle

Article No. A2056

250 ml Bottle for Piston Back Flushing



NETGEAR Switch 8-port international

Article No. A3119INT

8-port LAN GBit switch NetGear GS108GE, 8x RJ-45, GBit, Auto MDI-X, power plug UK, US or AUS



Back-Pressure Regulator/Pressure Relief Valve

Article No. A5804

Back-Pressure Regulator/pressure relief valve for 1/8" and 1/16" OD tubing, 134 µl volume, PEEK, provides a constant back-pressure of 1.4 bar (20 psi), contains pressure relief valve tee and fittings for 1/8" and 1/16"

[Schedule your free consultation now](#)



Tool kit AZURA

Article No. A1033

Tool Kit AZURA® for systems with PEEK or pre-cut capillary kits

Type : **Tool kit**

DOCUMENTS AND MORE INFORMATION

AZURA Bio LC brochure

FPLC and Purification Solutions, V7855US

Brochure English

[Schedule your free consultation now](#)

RELATED PRODUCTS



**Bio Purification System for
SEC, Lab standard**
For size exclusion
chromatography up to 10
ml/min

Article No.: A49030



**Bio Purification System for
AC, Lab standard**
For affinity
chromatography up to 50
ml/min

Article No.: A49031



**Multi Method FPLC
System, Lab standard**
for all Bio-Chromatography
methods

Article No.: A49032



**Advanced Bio purification
system**
for complex applications
including automated two
step applications

Article No.: A49033

[Schedule your free consultation now](#)

RELATED FAQs

How to control the supply of the buffers by PurityChrom to prevent the column from running dry?

PurityChrom | Software

Can I use my system pump to inject FPLC samples?

Pumps | P6.1L

What are the different injections techniques used in FPLC?

FPLC | PurityChrom | Autosampler

What is the optimal sample amount in SEC purifications?

FPLC | PurityChrom

How to avoid air entering the FPLC system?

FPLC | Troubleshooting

How to rapidly transfer methods in PurityChrom to columns with different column volume?

PurityChrom | Software

What is a delay volume?

FPLC | PurityChrom

What can be the reason of a fluctuating UV-detector signal in my FPLC system?

Troubleshooting | Detectors | FPLC

[Schedule your free consultation now](#)



Do you need more details or a quote?

We are happy to help you



+49 30 809727-0



sales@knauer.net

Technical data or prices are subject to change without notice. Prices may vary by country and do not include taxes, customs duties or delivery.

All trademarks are the property of their respective owners. Our general terms and conditions apply:

www.knauer.net/terms

[Schedule your free consultation now](#)