



Article No.: 724203110

Articlename: AZURA Prep Pilot LC 1000 HPG

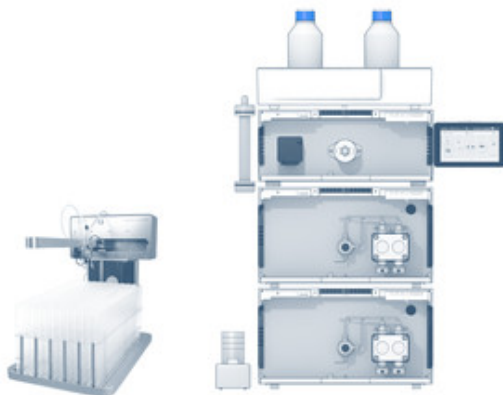
## AZURA Prep Pilot LC system, high pressure gradient

### Flowrate up to 1000 ml/min

The AZURA Pilot Prep LC 1000 HPG system is a complete binary high pressure gradient (HPG) HPLC system for the purification of samples in the laboratory scale. It is designed and optimized for the purification of gram samples. This system proposal consists of two preparative HPLC pumps, a UV/VIS detector and a freely customizable combination module. The AZURA P 2.1L pump covers a wide flow rate range and pressure capabilities. In the current setup, it supports max. pressures up to 75 bar at flow rates up to 350 ml/min (50 bar from 600 - 1000 ml/min). The integrated automatic recognition of the pump head with RFID technology allows fast adaptations of the pump for various applications. The HPG setup enables the precise formation of binary gradients. Besides, ternary and quaternary gradients are accessible by integration of additional preparative pumps. The AZURA UVD 2.1L represents a UV/VIS detector with a variable single wavelength for the detection of fast eluting peaks. The system is completed by an AZURA assistant ASM 2.1L for preparative HPLC. The assistant module can be customized to individual requirements. For

[Help](#)
[Schedule your free consultation now](#)

example, large sample volumes can be applied automatically via the integrated injection valve and feed pump. The AZURA Preparative HPLC system comes with an eluent tray for safe storage of eluent bottles and an integrated leak management system with sensors. Columns (20 mm and 30 mm ID) can be attached with an optional AZURA mounting bracket at both sides of each AZURA element. A leak sensor and the capillary guidance as well as the optional Mobile Control with touch screen facilitate the safe and user friendly operation. Modern design with completely demountable fronts turn the system into a visual highlight.



[Schedule your free consultation now](#)

## TECHNICAL DATA

### System specification

System type	Lab
Max. flow rate	1000 ml/min
Gradient	hpg
Maximum delivery pressure [psi]	730 psi
Maximum delivery pressure [bar]	50 bar
Maximum delivery pressure [MPa]	5 MPa
Detector	Variable single wavelength detection UV/VIS
Injection	automatic injection
Fractionation	Foxy R2
Software	ClarityChrom

[Schedule your free consultation now](#)

## SYSTEM COMPONENTS



### AZURA P 2.1L

Article No. APE20NA

AZURA® Pump P 2.1L with 1000 ml pump head (stainless steel)

Max. flow rate : **1000 ml/min**

Pump head materials : **Stainless Steel**

Gradient : **Isocratic**

Pump features : **Piston seal wash, Purge valve (manual),  
RFID for automatic pump head detection, Active pulsation  
compensation, Standalone control and programming,  
Integrated pressure sensor**

Maximum delivery pressure [MPa] : **7,5 MPa**



### AZURA UV/VIS Detector UVD 2.1L

Article No. ADA01XA

AZURA® Detector UVD 2.1L with deuterium lamp without flow cell, incl. test cell

Detector type : **Variable single wavelength UV detector**

Detection channels : **1**

Wavelength range : **190 - 750 nm**

Linearity : **> 2.0 AU at 274 nm (ASTM E1657-98)**



### AZURA Assistant ASM 2.2L

Article No. AY00139

Left module: Empty module Middle module: Valve drive VU 4.1 - EWA04  
Right module: Pump P 4.1S, 50 bar, 50 ml, stainless steel - DPG12FA

Left module : **Empty module**

Middle module : **Valve drive VU 4.1 - EWA04**

Right module : **Pump P 4.1S, 50 bar, 50 ml, stainless steel -  
DPG12FA**

[Schedule your free consultation now](#)



### AZURA V 4.1 Valve

Article No. AVE25AE

2-position valve, 6 Port, DLC stainless steel, PEEK, 1/8", 300 bar, 1.5 mm bore size

Operated : **electrical by VU 4.1**

Port number : **6**

Positions : **2**

Material : **Stainless steel**

Capillary connection : **1/8"**



### Preparative UV Flow Cell

Article No. A4068

2 mm path length, 1/4" angular connections, 200 bar, stainless steel, changeable to 0.5/1.25 mm, without fittings, classical KNAUER flow cell

Flow cell type : **Preparative UV flow cell**

Path length : **0.5 / 1.25 / 2 mm**

Capillary connection : **1/4" (angular connections)**

Max. flow rate : **10000 ml/min**

Flow cell volume : **1.7 / 4.3 / 6.8 µl**



### Chromatography Workstation: PC plus monitor

Article No. A13120

Desktop PC (SFF) for PurityChrom® and ClarityChrom® with 24" monitor, English edition Windows 10 Prof. 64-bit English, Intel® Core™ i5, 8 GB RAM, 256 GB SSD, two network cards

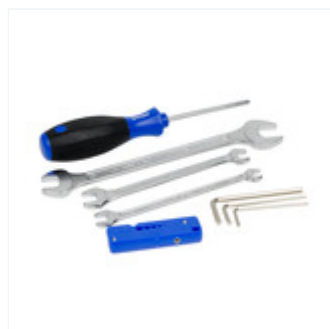
[Schedule your free consultation now](#)



### **Router 8-Port LAN, WiFi, EU version**

Article No. A64809

WiFi router, 8x LAN GBit RJ-45 ports, 1x WAN GBit RJ-45 port



### **Tool kit AZURA**

Article No. A1033

Tool Kit AZURA® for systems with PEEK or pre-cut capillary kits

Type : **Tool kit**



### **AZURA Start-Up Kit 1/4\"/>**

Article No. A9850-2

AZURA® Start-Up Kit 1/4\"/>



### **PurityChrom® Basic**

Article No. A2650

Basic License for one system

Software name : **PurityChrom® 5**

[Schedule your free consultation now](#)



### **Rack for Foxy R2**

Article No. A59114

Rack for 2 x 9 bottles 480 ml for Foxy® R2 (not suitable for Foxy® R1, bottles too tall)



### **40 ml KNAUER VariLoop L for 1/8" tubings**

Article No. A1160-1

KNAUER VariLoop L, 40 ml, 1/8", stainless steel, variable injection volume and multiple injections



### **Pressure release valve**

Article No. A5801

Pressure Release Valve Kit for AZURA® pump P 2.1L and 80P (3,4 to 24 bar), 1/8", stainless steel, cross piece titanium



### **Mobile Control Tablet Mount**

Article No. A9617

Mobile Control Mount - flexible tablet mount for tablets

[Schedule your free consultation now](#)



### Fraction Collector Foxy R2

Article No. A591021

Fraction collector Foxy® R2 for 1/4" tubing

Max. flow rate : **1000 ml/min**

Capillary connection : **1/4"**

Brand : **Foxy R2**



### Rack for Foxy R1/R2

Article No. A59110

Rack for 36 Falcon 50 ml for Foxy® R1/R2

[Schedule your free consultation now](#)



## ACCESSORIES & SPARE PARTS



**Mounting bracket AZURA  
L**  
Mounting bracket AZURA®  
L for columns with 25 - 29  
mm AD

**Article No.: A9853-3**



**Torque wrench**  
Torque wrench basic tool,  
1-25 Nm, without plug-in  
head

**Article No.: X0219**



**Product riser AZURA**  
Product Riser AZURA®:  
Set of 4 feet that lift the  
device to a height of 28  
mm for easy handling of  
the waste tube of the  
drainage system

**Article No.: A9860**



**Pump head inlet**  
Pump head inlet for  
AZURA® Pump P 2.1L,  
BlueShadow 80P, 1/4"  
(NPT), stainless steel,  
max. flow 250 ml/min

**Article No.: A9861**

[Schedule your free consultation now](#)

## DOCUMENTS AND MORE INFORMATION

### **AZURA SMB systems instructions EN (V6775)**

Manual    English

---

### **AZURA Präparatives System Installationskarte DE (V6800)**

Manual    German

---

### **AZURA pre-installation guide for analytical systems User Manual EN (V6802-Ana)**

Manual    English

---

### **AZURA Preparative HPLC brochure**

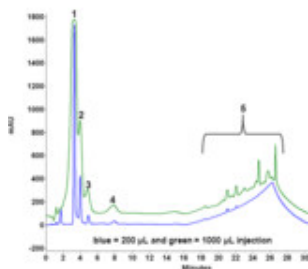
AZURA Preparative HPLC brochure, V7820US

Brochure    English

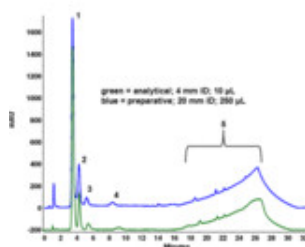
---

[Schedule your free consultation now](#)

## APPLICATIONS FOR THIS PRODUCT



**Preparative  
Separation of Apple  
Flavours from  
Extract**



**Scale-Up for  
Preparative  
Separation of Apple  
Flavours from  
Extract**

[Schedule your free consultation now](#)

## RELATED PRODUCTS



**Fraction Collector Foxy R2**  
Fraction collector Foxy®  
R2 for 1/4" tubing

**Article No.: A591021**



**AZURA Prep Pilot LC  
system, isocratic**  
P 2.1L Pump with 250  
ml/min pump head ASM  
2.1L Assistant with feed  
pump, fractionation and  
injection valve UVD 2.1L  
Detector

**Article No.: 744201010**



**AZURA Prep Pilot LC  
system, low pressure  
gradient**  
P 2.1L Pump with 250  
ml/min pump head and  
LPG-block ASM 2.1L  
Assistant with UV-Detector  
and fraction valve Feed  
introduction via LPG-  
Channel or manual  
injection valve

**Article No.: 741102010**



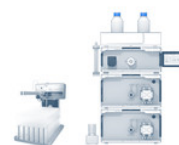
**AZURA Prep Pilot LC  
system, high pressure  
gradient**  
2 x P 2.1L Pump with 250  
ml/min pump head ASM  
2.1L Assistant with feed  
pump, fractionation and  
injection valve UVD 2.1L  
Detector

**Article No.: 744203110**



**AZURA Prep Pilot LC  
system, isocratic**  
P 2.1L Pump with 100  
ml/min pump head ASM  
2.1L Assistant with feed  
pump, fractionation and  
injection valve UVD 2.1L  
Detector

**Article No.: 755201110**



**AZURA Prep Pilot LC  
system, high pressure  
gradient**  
2 x P 2.1L Pump with 100  
ml/min pump head ASM  
2.1L Assistant with feed  
pump, fractionation and  
injection valve UVD 2.1L  
Detector

**Article No.: 755203110**

[Schedule your free consultation now](#)

## RELATED FAQs

### How much detection does a preparative HPLC system need?

Detection | Preparative HPLC

---



### Do you need more details or a quote?

We are happy to help you



+49 30 809727-0



[sales@knauer.net](mailto:sales@knauer.net)

Technical data or prices are subject to change without notice. Prices may vary by country and do not include taxes, customs duties or delivery.

All trademarks are the property of their respective owners. Our general terms and conditions apply:

[www.knauer.net/terms](https://www.knauer.net/terms)

[Schedule your free consultation now](#)