



Article No.: A48021

Articlename: AZURA Cannabis Purifier

Cannabis Purifier: Preparative HPLC system for batch purification of single cannabinoids from cannabis extracts

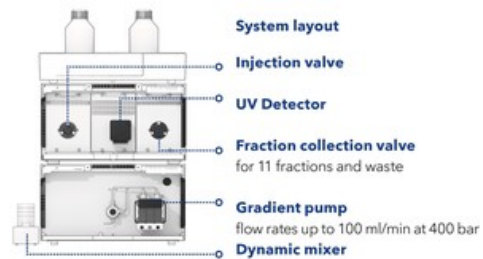
Preparative system with ternary gradient pump, UV-detector, injection and fractionation valve

The AZURA Cannabis Purifier is a dedicated preparative system to purify cannabinoids from cannabis extracts. The HPLC layout consists of a pump with ternary LPG valve block and a HPLC docking station equipped with a variable single wavelength UV detector an injection and a fractionation valve for 11 fractions and waste. The system is designed for method development und small volumes of sample in a flow rate range between 10 to 80 ml/min at maximum 400 bar. The system is controlled by the intuitive and touch-optimized Mobile Control, which is installed on a tablet. The software has a simple function for threshold based fractionation. Depending on the value of the detector signal the target substances/peaks are collected automatically. The purification of CBD from a cannabinoid oil is shown exemplarily.

Due to its modular design, the system can be
e^r 1 to higher flow rates by simply
r^u **Help** pump head, valves, flow cell and

[Schedule your free consultation now](#)

capillaries. The basic devices do not need to be replaced. The next scale-up level allows flow rates up to 200 ml/min at 200 bar. The 1/16" capillaries are exchanged for 1/8" capillaries. Higher sample volumes are injected via a channel of the gradient pump. The modules of the HPLC docking station and the valves are exchanged within minutes and allow to flexibly adapt the system to changing purification tasks.



AZURA Cannabis Purifier - system layout

[Schedule your free consultation now](#)

TECHNICAL DATA

System specification

System type	Pilot
Max. flow rate	100 ml/min
Gradient	lpg
Maximum delivery pressure [psi]	5800 psi
Maximum delivery pressure [bar]	400 bar
Maximum delivery pressure [MPa]	40 MPa
Detector	Variable single wavelength detection UV/VIS
Injection	automatic injection
Fractionation	multi-position valve
Software	PurityChrom

[Schedule your free consultation now](#)

SYSTEM COMPONENTS



AZURA P 2.1L

Article No. APE20KA

AZURA® Pump P 2.1L with 100 ml pump head (stainless steel)

Max. flow rate : **100 ml/min**

Pump head materials : **Stainless Steel**

Gradient : **Isocratic**

Pump features : **Piston seal wash, Leak management, Purge valve (manual), RFID for automatic pump head detection, Active pulsation compensation, Integrated pressure sensor**

Maximum delivery pressure [MPa] : **40 MPa**



AZURA LPG ternary module for Pump P 2.1L

Article No. AZZ00AB

LPG module for Pump P 2.1L ternary up to 220 ml/min (stainless steel)



Dynamic mixer

Article No. A0581

Dynamic mixing chamber (250 V), stainless steel, preparative, 1/8", up to 250 bar, 5.9 ml mixing volume

Mixing volume : **5.9 ml**

Pressure rating : **max. 250 bar (25 MPa)**

Recommended flow rate : **< 100 ml/min**

[Schedule your free consultation now](#)



AZURA Assistant ASM 2.2L

Article No. AY00593

Left module: Valve drive VU 4.1 - EWA04 Middle module: UV detector UVD 2.1S - EDA03XA Right module: Valve drive VU 4.1 - EWA04

Left module : **Valve drive VU 4.1 - EWA04**

Middle module : **UV detector UVD 2.1S - EDA03XA**

Right module : **Valve drive VU 4.1 - EWA04**



Semi-preparative UV Flow Cell

Article No. A4042

3 mm path length, 2 µl, 1/16", stainless steel, classical KNAUER flow cell

Flow cell type : **Semi-preparative UV flow cell**

Path length : **3 mm**

Capillary connection : **1/16"**

Max. flow rate : **50 ml/min**

Flow cell volume : **2 µl**



AZURA V 4.1 Valve

Article No. AVD26AE

2-position valve, 6 Port, DLC stainless steel, PEEK, 1/16", 500 bar, 0.75 mm bore size

Operated : **electrical by VU 4.1**

Port number : **6**

Positions : **2**

Material : **Stainless steel**

Capillary connection : **1/16"**

[Schedule your free consultation now](#)



AZURA V 4.1 Valve

Article No. AVT53AE

Multiposition valve, 12 ports, DLC stainless steel, PEEK, 1/8", 100 bar, 1.5 mm bore size

Operated : **electrical by VU 4.1**

Port number : **12**

Positions : **Multiposition**

Material : **Stainless steel**

Capillary connection : **1/8"**



AZURA L tubing guide

Article No. A5329-3

Sorting of 1/8" and 1/16" tubings single-sided of AZURA L devices – 2 rows with each 16 holes



Inlet-bushing kit LPG

Article No. A58206

Solvent Filter 1/4" PTFE tubing max Flow 250 ml/min



AZURA Capillary Start-up kit

Article No. A9849-1

AZURA® start-up kit 1/16", stainless steel, semi-prep, capillary kit

[Schedule your free consultation now](#)



Adapter 1/16" to 1/8"

Article No. A7204

Adapter to connect a capillary with 1/16" OD (thread: 10-32 UNF) to 1/8" (thread: 1/4-28 UNF coned), SSt



Injection syringe

Article No. A0730

Injection syringe 2500 µl



2 ml Sample loop

Article No. A0568

Sample loop, 2000 µl, stainless steel, 1 mm ID



Eurosphere II 100-10 C18, Column 150x20 mm

Article No. 15JE181E2N

Preparative Column

Modification : **C18**

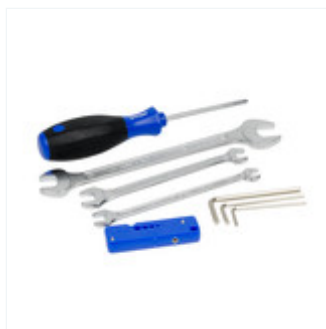
Length [mm] : **150 mm**

Inner diameter [mm] : **20 mm**

Brand : **Eurosphere II**

Particle size : **10 µm**

[Schedule your free consultation now](#)



Tool kit AZURA

Article No. A1033-1

Tool Kit AZURA® for 1/16" systems (stainless steel)

Type : **Tool kit**

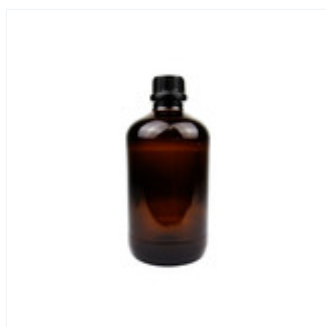


AZURA Eluent tray E 2.1L

Article No. AZC00

AZURA® Eluent tray E 2.1L for AZURA® devices with a capacity of 6 x 1 l bottles or 4 x 2.5 l bottles or 2 x 5 l bottles, (delivery without bottles)

Type : **Eluent tray**



Set of eluent supply bottles

Article No. A70037

Set of eluent supply bottles, 3 x 2.5 L brown glass bottles (borosilicate glass) with special round bottom for minimal eluent remainder, for preparative HPLC/FPLC, includes screw-type cap



250 ml Bottle

Article No. A2056

250 ml Bottle for Piston Back Flushing

[Schedule your free consultation now](#)



Installation Box Kit

Article No. A9862

Installation Box Kit, Box for small parts, KNAUER file folder and support sticker



Router 8-Port LAN, WiFi, international

Article No. A64809INT

WiFi router, 8x LAN GBit RJ-45 ports, 1x WAN GBit RJ-45 port, power plug UK, US or AUS

[Schedule your free consultation now](#)

ACCESSORIES & SPARE PARTS



Back-Pressure Regulator
Back-Pressure Regulator
for 1/16" OD tubing, 10-32
threads, PEEK, Range 1-20
bar (15-300 psi)

Article No.: A70087



Preparative UV Flow Cell
2 mm path length, 1/8",
200 bar, stainless steel,
changeable to 0.5/1.25
mm, classical KNAUER
flow cell

Article No.: A4066



Preparative UV Flow Cell
0.5 mm path length, 3 µl,
1/16", 200 bar, stainless
steel, classical KNAUER
flow cell

Article No.: A4069



Torque wrench
Torque wrench basic tool,
1-25 Nm, without plug-in
head

Article No.: X0219



Product riser AZURA
Product Riser AZURA®:
Set of 4 feet that lift the
device to a height of 28
mm for easy handling of
the waste tube of the
drainage system

Article No.: A9860



1 ml Sample loop
Sample loop, 1 ml,
stainless steel, 2.2 mm ID

Article No.: A1043

[Schedule your free consultation now](#)

DOCUMENTS AND MORE INFORMATION

AZURA Präparatives System Installationskarte DE (V6800)

Manual German

AZURA pre-installation guide for analytical systems User Manual EN (V6802-Ana)

Manual English

AZURA Preparative HPLC brochure

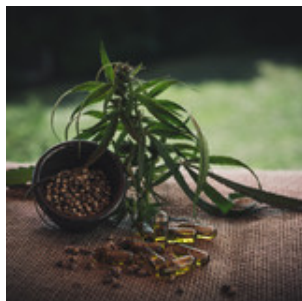
AZURA Preparative HPLC brochure, V7820US

Brochure English

APPLICATIONS FOR THIS PRODUCT



**Purify CBD and
other cannabinoids
by preparative HPLC**



**Purification of
cannabidiol from
CBD oil by
preparative HPLC**

[Schedule your free consultation now](#)

RELATED PRODUCTS



AZURA Prep Pilot LC system, isocratic

P 2.1L Pump with 250
ml/min pump head ASM
2.1L Assistant with feed
pump, fractionation and
injection valve UVD 2.1L
Detector

Article No.: 744201010



AZURA Prep Pilot LC system, high pressure gradient

2 x P 2.1L Pump with 250
ml/min pump head ASM
2.1L Assistant with feed
pump, fractionation and
injection valve UVD 2.1L
Detector

Article No.: 744203110



AZURA Prep Pilot LC system, isocratic

P 2.1L Pump with 100
ml/min pump head ASM
2.1L Assistant with feed
pump, fractionation and
injection valve UVD 2.1L
Detector

Article No.: 755201110



AZURA Prep Pilot LC system, high pressure gradient

2 x P 2.1L Pump with 1000
ml/min pump head ASM
2.1L Assistant with feed
pump and injection valve
UVD 2.1L Detector

Article No.: 724203110



AZURA Prep Pilot LC system, high pressure gradient

2 x P 2.1L Pump with 100
ml/min pump head ASM
2.1L Assistant with feed
pump, fractionation and
injection valve UVD 2.1L
Detector

Article No.: 755203110

[Schedule your free consultation now](#)



Do you need more details or a quote?

We are happy to help you



+49 30 809727-0



sales@knauer.net

Technical data or prices are subject to change without notice. Prices may vary by country and do not include taxes, customs duties or delivery.

All trademarks are the property of their respective owners. Our general terms and conditions apply:
www.knauer.net/terms

[Schedule your free consultation now](#)