



Article No.: A46014

Articlename: HPLC System for Sugar Analysis

HPLC System for Sugar Analysis

Dedicated system

Carbohydrates, alcohols, and organic acids are important in the manufacture of many foods, pharmaceuticals, and biofuels. This dedicated system is specially designed to separate and analyze these compounds. The heart of this system is the superior AZURA refractive index detector RID 2.1L with an outstanding linear range and sensitivity. More systems components are the column thermostat CT 2.1 and the isocratic AZURA pump P 6.1L for delivery of small flow rates (0.001 -10 ml/min) and pressure up to 700 bar. This price attractive system is developed to run simple and rapid methods that enable simultaneous determination of sugars, organic acids and alcohols. Therefore, an interesting application is the analysis of all major wine compounds (see our application note) for quality control.



System Sugar Analytic

TECHNICAL DATA

Analytical system

| | |
|--------------------------|-------------------------------|
| Application area | HPLC |
| Pump system | Isocratic |
| Gradient | None |
| Injection | Handinjection |
| Detector | Refractive index detection RI |
| Software | ClarityChrom |
| Pressure | 700 bar |
| Column thermostat | Yes |

SYSTEM COMPONENTS



AZURA Eluent tray E 2.1L

Article No. AZC00

AZURA® Eluent tray E 2.1L for AZURA® devices with a capacity of 6 x 1 l bottles or 4 x 2.5 l bottles or 2 x 5 l bottles, (delivery without bottles)



AZURA P 6.1L

Article No. APH30EA

AZURA® Pump P 6.1L isocratic, without degasser, with 10 ml pump head (stainless steel)

Max. flow rate : **10 ml/min**

Pump head materials : **Stainless Steel**

Gradient : **Isocratic**

Maximum delivery pressure [MPa] : **70 MPa**

Maximum delivery pressure [bar] : **700 bar**



250 ml Bottle

Article No. A2056

250 ml Bottle for Piston Back Flushing



Eluent supply bottle 1000 ml

Article No. A5325

Eluent supply bottle 1000 ml, GL45 thread, square, Clear glass, with screw cap with 2 holes for tubing



AZURA CT 2.1

Article No. A05852

Column thermostat CT 2.1 for constant temperatures and reproducible results



High Sensitive Refractive Index Detector for Liquid Chromatography

Article No. ADD31

AZURA® Detector RID 2.1L analytical refractive index detector with flow cell

Detector type : **Refractive index detector**

Detection channels : **1**

Linearity : **> 1000 µRIU**



Mobile Control with tablet

Article No. A9607

Mobile Control for AZURA devices without data acquisition including 10" tablet and mount

Software name : **Mobile Control - basic display software for AZURA devices without data acquisition**



Chromatography Workstation

Article No. A13120

Chromatography Workstation for PurityChrom® and ClarityChrom® with 24" monitor, Windows 10, Intel® Core™ i5, 8 GB RAM, 256 SSD, two network cards, international edition



ClarityChrom 8.1 - Workstation, autosampler control included

Article No. A1670

ClarityChrom® single instrument license for one time base

Software name : **ClarityChrom**



Router 8-Port, international version

Article No. A64809INT

WLAN Router with international power supply wo plug, 8-port Gigabit RJ-45



Injection syringe

Article No. A0726

Injection syringe 100 µl



AZURA Capillary Start-up kit

Article No. A9849

AZURA® start-up kit 1/16" stainless steel, capillary kit



Installation Box Kit

Article No. A9862

Installation Box Kit, Box for small parts, KNAUER file folder and support sticker



Tool kit AZURA

Article No. A1033-1

Tool Kit AZURA® for 1/16" systems (stainless steel)



AZURA V 2.1S valve

Article No. AVI26BC

Manual 6 Port 2-position valve, stainless steel, 1/16", 400 bar

Operated : **manual**

Port number : **6**

Positions : **2**

Capillary connection : **1/16"**

Max. pressure [bar] : **400 bar**



Mounting bracket AZURA L

Article No. A9853

Mounting bracket AZURA® L for KNAUER manual injection valves

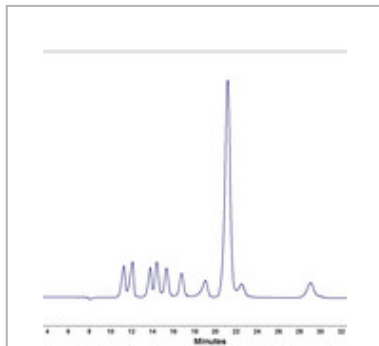
DOCUMENTS AND MORE INFORMATION

AZURA System Selection Guide (V7857US)

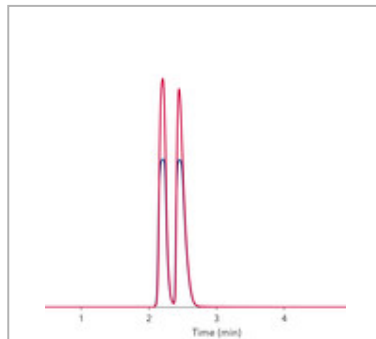
AZURA System Selection Guide, V7857US

Brochure English PDF 1.3 MB

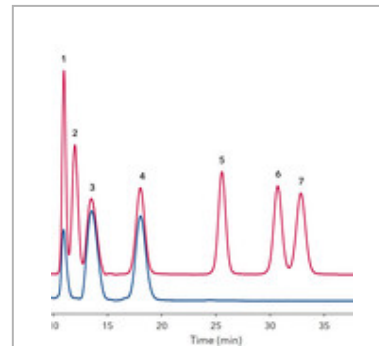
APPLICATIONS FOR THIS PRODUCT



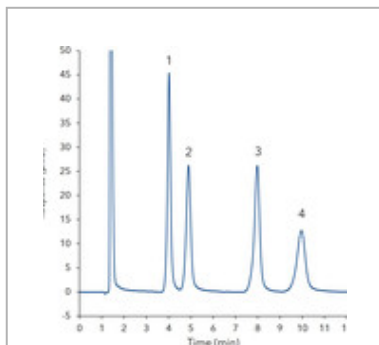
**Routine Analysis Of
Ingredients In Wine**



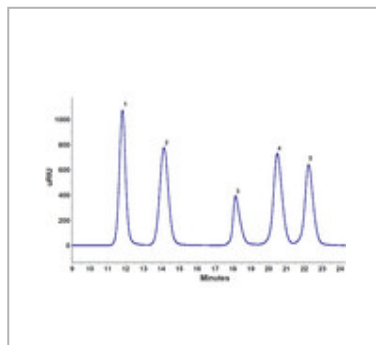
**Simplified scale up
for sugars with the
AZURA RID 2.1L
extended dynamic
range option**



**Determination of
sugars and natural
sugar substitutes in
different matrices**



**Determination of
sugars in honey
using HILIC
separation and RI
detection**



**Determination of
sugars, ethanol and
glycerol in wine**